

13.2 notes

Exponential Growth

$$f(x) = b^x, b > 1$$

Domain $-\infty < x < \infty$ or $x \in \mathbb{R}$

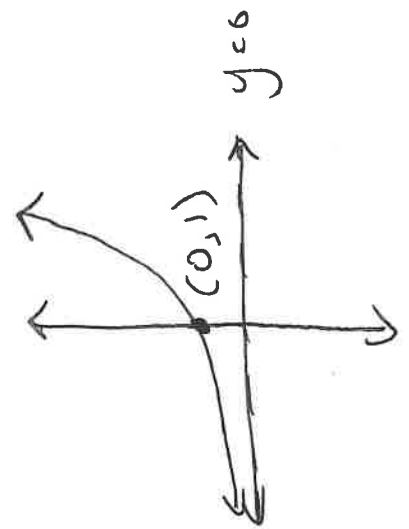
Range $y > 0$

Transformations

$$y = a(b)^{x-h} + k$$

Same

Graph



Exponential Decay

$$f(x) = b^x, 0 < b < 1$$

Same

Same

Graph

